

# CASPIAN LAKE

**Greensboro, VT**

**Lay Monitor:** Andy Dales

**Former Lay Monitors:** George Hasen  
Scott Irwin

Caspian Lake is a large, deep, coldwater lake.

Lake Surface Area: 789 acres

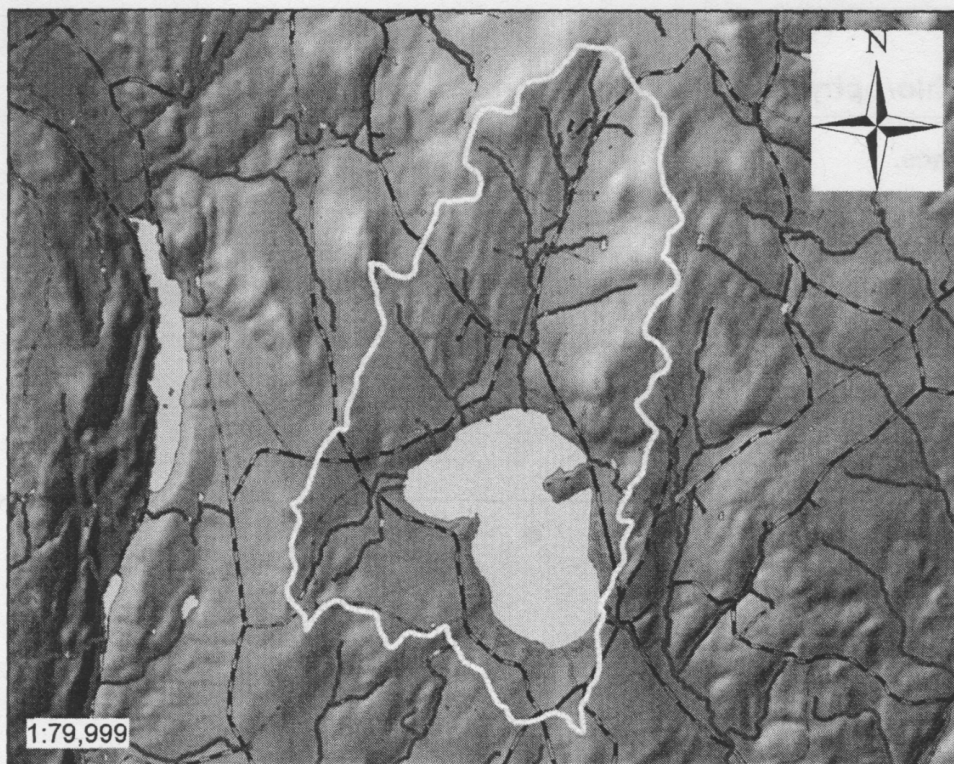
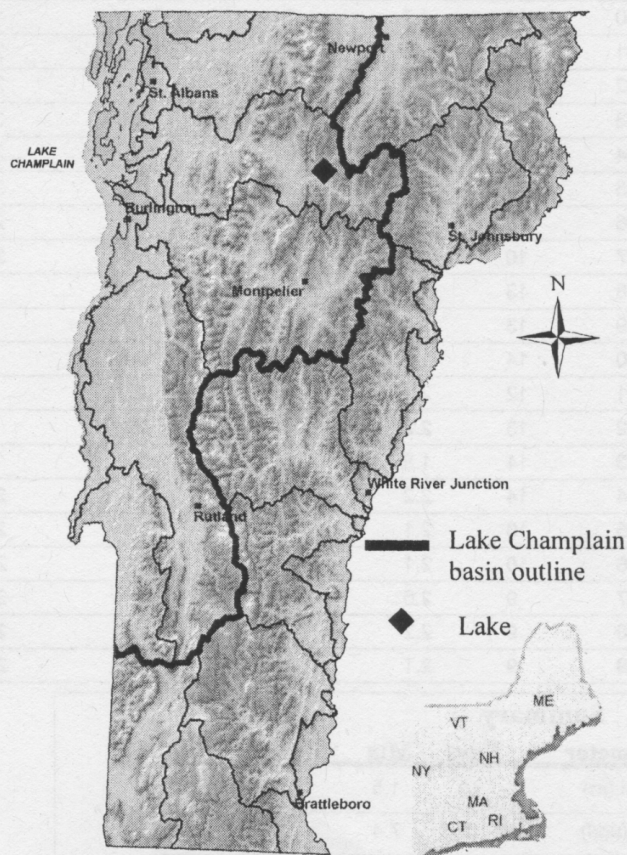
Drainage Basin Area 4,510 acres

Maximum depth: 142 ft. (43.0 m)

Average depth: 57 ft. (17.3 m)

**Compared to other lakes, the trophic state is**  
Oligotrophic

<u>Trophic State</u>	<u>Average Secchi Clarity</u>	<u>Ave. Chlorophyll-a</u>	<u>Ave. Total Phosphorus</u>
Oligotrophic	> 5.5 meters	< 3.5 $\mu\text{g/l}$	< 7.0 $\mu\text{g/l}$
Mesotrophic	3.0 - 5.5	3.5 - 7.0	7.0 - 14
Eutrophic	< 3.0	> 7.0	> 14



**Lake outlined by its watershed**